



Pôm SEVESTRE

CREATIVE DESIGN MANAGER & LINGERIE DESIGNER

pom@pomsevestre.com

www.pomsevestre.com

tel: +33 6 17 62 17 91

Pôm SEVESTRE

Creative design manager - Consultant

WEB: www.pomsevestre.com

EMAIL: pom@pomsevestre.com

PHONE: +33 6 17 62 17 91

WORK EXPERIENCE

Feb. 2020 - Today	SIMONE PERELE . PARIS Senior Designer and Consultant Design AW21 collection
May 2018 - Feb. 2020	AMOSTYLE BY TRIUMPH . HONG KONG Creative design manager Repositioning + New Identity + Design + Management + Innovation + Fitting + Global collections
Nov. 2017	AMAZON FASHION UK Consultant AW18 Intimates Retail Buying brief Key Items + Colors + Materials + Print & Pattern + Details
May 2016 - Jan. 2017	DARJEELING . PARIS Senior Designer and Consultant Consulting for lingerie + Design nightwear collection
June 2014 - Dec. 2015	WONDERBRA . PARIS Senior Designer and Consultant Repositioning + New Identity + Design of SS16 - FW16/17- SS17 collections
End 2008 - Sept. 2017	ABSOLUTELY PÔM . PARIS Owner & Designer Lingerie + Corsetery + Beachwear + Homewear Luxury brand
2012	COLLABORATION - GUERLAIN BY ABSOLUTELY PÔM Capsule collection with L'Eau de Lingerie
Nov. 2009 - March 2010	WOLF LINGERIE . HONG KONG Designer and Consultant + Team re-organization
2006 - 2008	ETAM LINGERIE . SHANGHAI Design Manager
2005 - 2006	ORIGIN'L . SHENZHEN Designer private label division
2005	DIM Lingerie - PLAYTEX - WONDERBRA . PARIS Concept Designer
2002 - 2004	HOP LUN . HONG KONG Senior Designer . NO ROMÉO Art Director + Follow-up fittings & production
2001 - 2002	DIOR LINGERIE (SIL) . PARIS Designer

EDUCATION

1998 - 2001	DEGREE IN DESIGN & PATTERN MAKING ESMOD PARIS 2nd Major
1995 - 1998	BACCALAURÉAT - F12 Arts Appliqués ÉCOLE ESTIENNE PARIS (École Supérieure des Arts et et Industries Graphiques) Architecture + Graphic + Design + Fashion Design

ABOUT ME

Born: 02/09/1980

Nationality: French

Experience : 18 Years

Location: Paris

Availability: Worldwide
Integrated / Freelance / Consultant

OBJECTIVE

“ To obtain in house or
freelance position, using my skills
and knowledge, as Head of design,
Creative director or Consultant

**Design, Management, Coordination,
Analysis, Fitting, Production, Sourcing,
Buying**

European / Asian markets knowledge

**INTIMATES - NIGHTWEAR
HOMEWEAR - LOUNGEWEAR
SWIMWEAR - SPORTSWEAR
INNOVATION - ACCESSORIES**

SKILLS

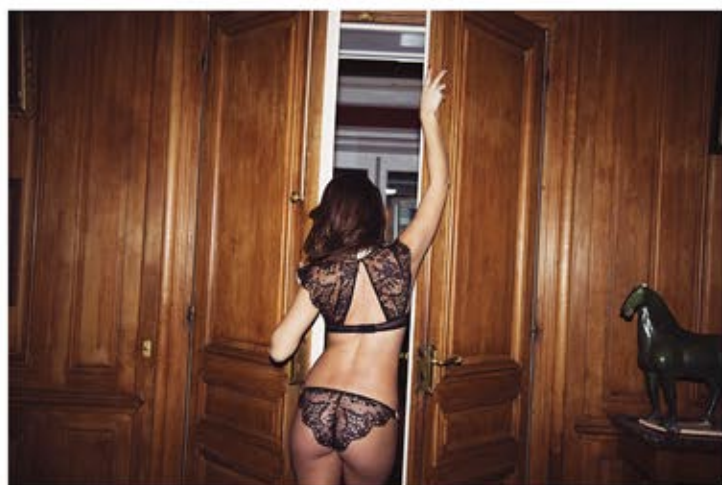
Photoshop - Illustrator
Pack Office

LANGUAGES

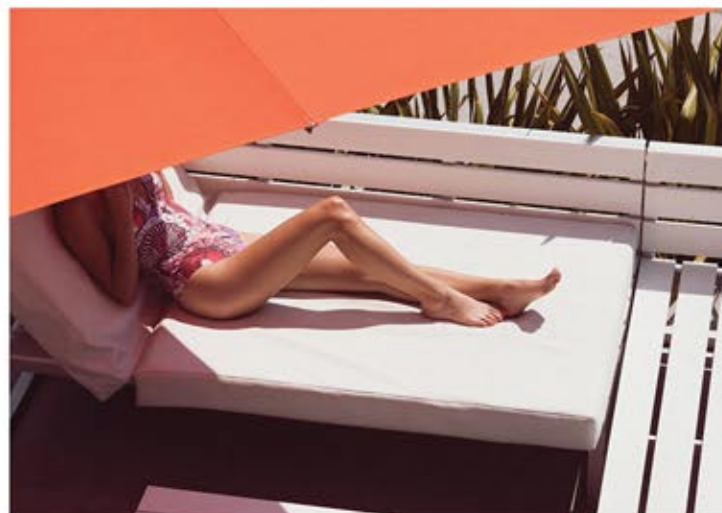
French Mother tongue
English Fluent

INTIMATES - NIGHTWEAR

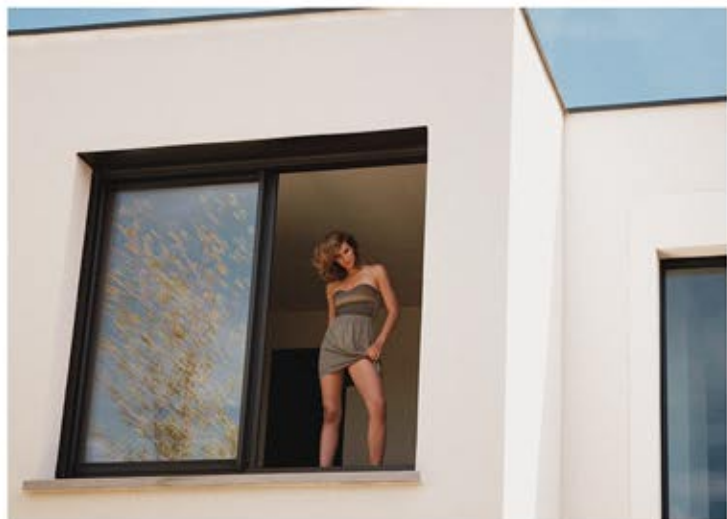
ELEGANT - URBAN - COUTURE



SWIMWEAR - BEACHWEAR



SWIMWEAR - BEACHWEAR



CREATION FOR THE 5th YEAR ANNIVERSARY OF L'EXCEPTION

SS17 - Exclusive limited edition



Maillot de bain 1 pièce



GUERLAIN x ABSOLUTELY PÔM COLLABORATION

Guerlain by *Absolutely Pôm*
Lingerie fine de caractère *Pôm*

Quelle femme souhaitez-vous incarner ce soir ?

Guerlain a créé les *Elixirs Charnels*. Cinq fragrances qui jouent sur les plaisirs olfactifs, et sont d'infinies propositions de silhouettes pour la femme d'aujourd'hui.

Dans ce prolongement, Guerlain imagine un rituel à fleur de peau, tout en délicatesse : l'*Eau de Lingerie*. Cette senteur inédite se vaporise sur les dessous, comme une invitation à la beauté absolue.

Pour accompagner ce nouveau geste de séduction, la Maison Guerlain a confié un exercice de style à *Absolutely Pôm*, Maison française de lingerie fine qui a imaginé cinq pièces exclusives, en édition limitée, pour illustrer chacune des femmes *Elixirs Charnels*.

Which woman would you like to play tonight ?

Guerlain has created the *Elixirs Charnels* as a collection of five fragrances, which deftly play with the finer olfactory pleasures to create just as many possible silhouettes for today's woman.

To continue the story, Guerlain has created a delicate and intimate ritual: the *Eau de Lingerie*. This new fragrance is designed to be sprayed onto your lingerie, inviting you to indulge in new levels of sensuality.

To go with this new seductive beauty secret, Guerlain entrusted French lingerie brand *Absolutely Pôm* with an exercise in style, to create five distinctive lingerie silhouettes for Guerlain, in limited edition, to illustrate the *Elixirs Charnels* collection.

www.guerlain.com - www.absolutelypom.com

Boisé Torride



Oriental Brûlant



Gourmand Coquin



Chypre Fatal



Floral Romantique



Absolutely Pôm
Lingerie fine de caractère

GUERLAIN x ABSOLUTELY PÔM - PRINTEMPS HAUSSMANN



INTIMATES

Design AW 21 collection *Simone* & SIMONE PÉRÈLE

Oiseau de nuit

AH 21

Mordoré



Tom Ford



Tom Ford

Libre & Audacieuse



Glamour, Sophistiquée



Jason Wu



Feminin & Masculin



Antonio Marras



Panthère



Graphic



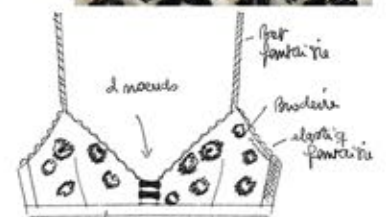
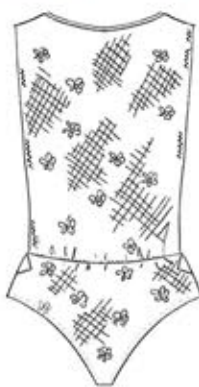
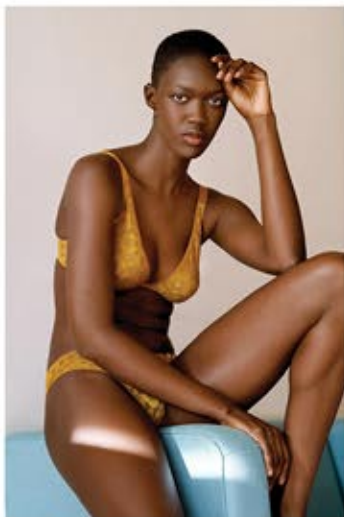
Archive Simone Pérèle



Reem Acri



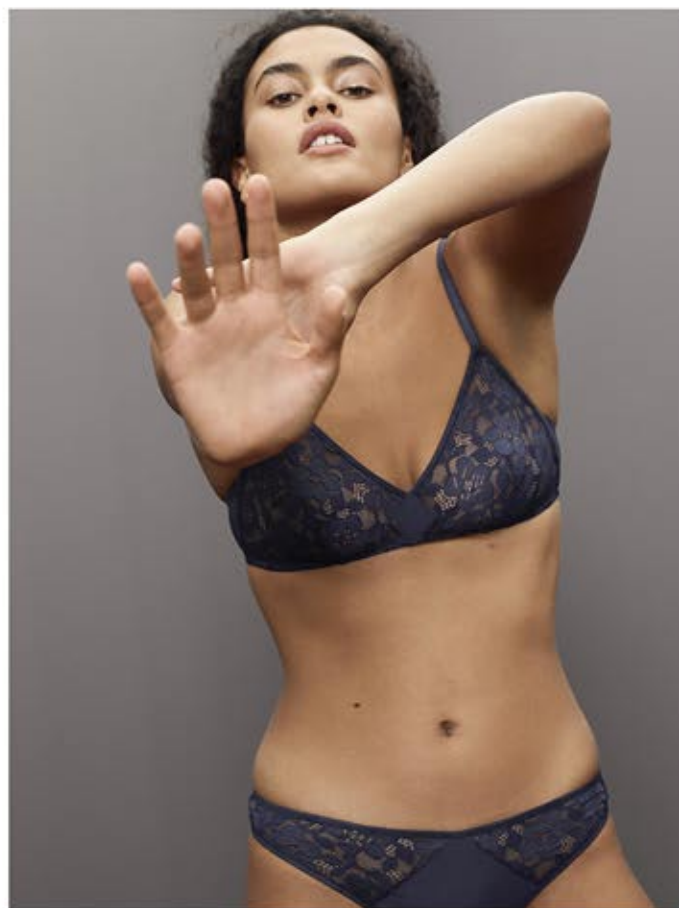
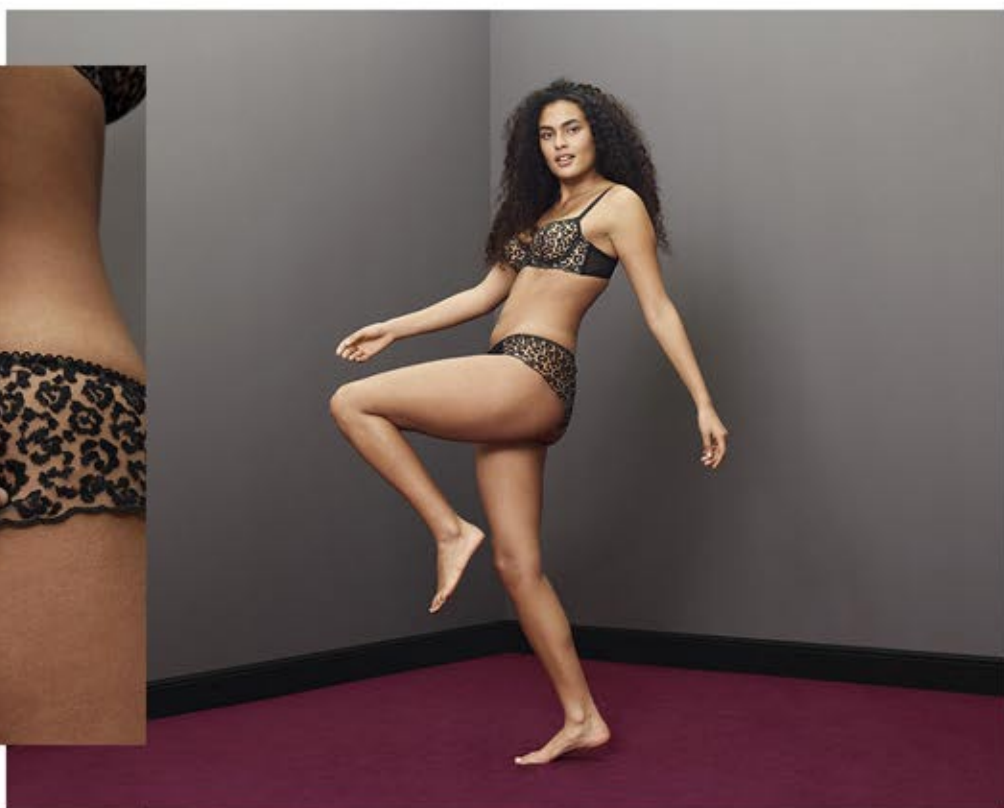
Cette saison, la femme Simone Pérèle s'amuse, danse, rit, dans un décor 70'. La tête dans les étoiles, elle est joyeuse et libre ! Dentelles graphiques et à fleurs de peau, sophistiquée, glam', et esprit féminin - masculin. Cet hiver, on ose les coloris pop, vert, orange, violet, rouge, rose; et toujours le classique bleu marine et noir, relevé de touche doré.



SIMONE PÉRÈLE
PARIS

INTIMATES

Design AW 21 collection *Simone*
& SIMONE PÉRÈLE



SIMONE PÉRÈLE
PARIS

INTIMATES

Design AW 21 collection *Simone*
& SIMONE PÉRÈLE



SIMONE PÉRÈLE
PARIS

REPOSITIONING + NEW IDENTITY + DESIGN

Repositioning. New identity. Design SS16. AW16-17. SS17 collections





Wonderbra



wonderbra

CONSULTING INTIMATES + DESIGN NIGHTWEAR

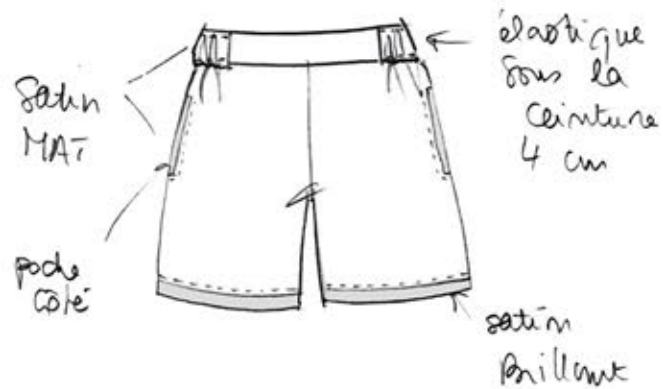
Design AW17.18 collection



Tara & Agyness ranges



short long



idée du peignoir
Stomocking court

en colonne
satin
brillant



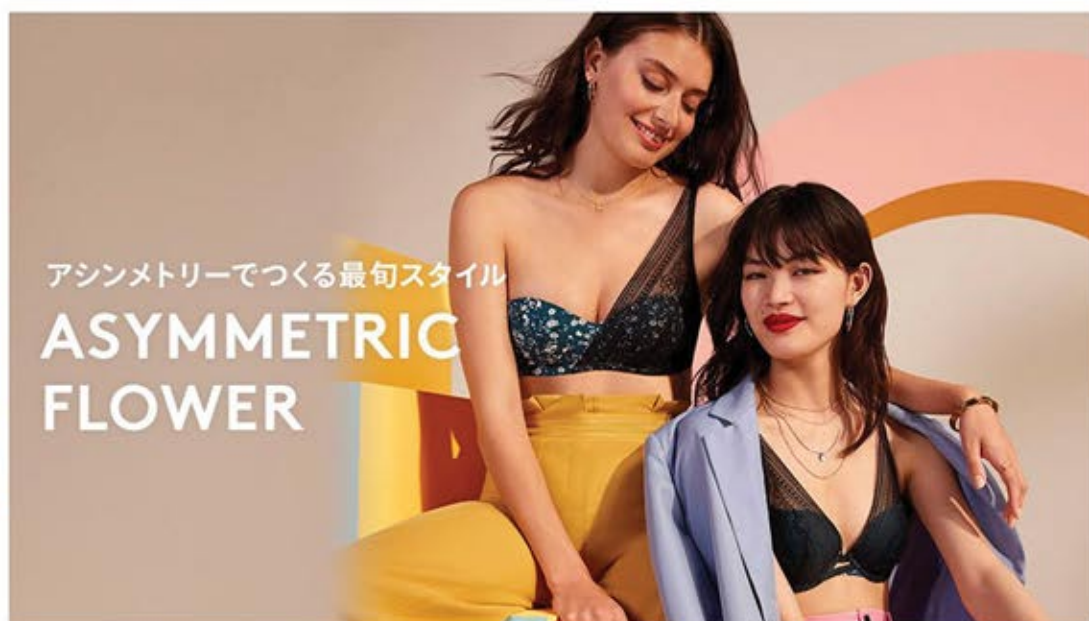
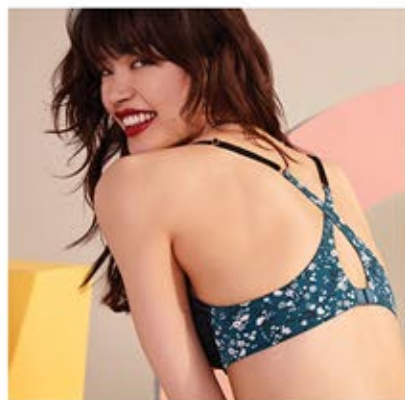
lente
4 cm



Darjeeling

INTIMATES

Creative design AW19 Collection

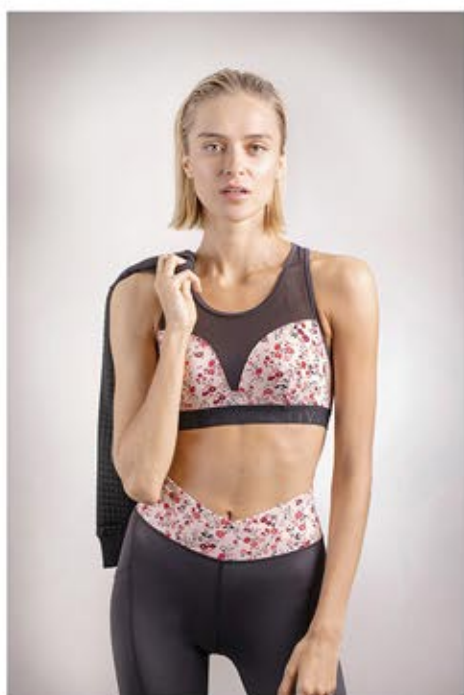


AM♡STYLE

by Triumph

SPORTSWEAR - LOUNGEWEAR

Creative design AW19 Collection



SPORTSWEAR

Creative design SS 20 Collection . Ini NEUMANN x AMOACTIVE Collaboration



AMOACTIVE



AMOSTYLE

by Triumph

EASYWEAR - LOUNGEWEAR

Creative design SS20 Collection

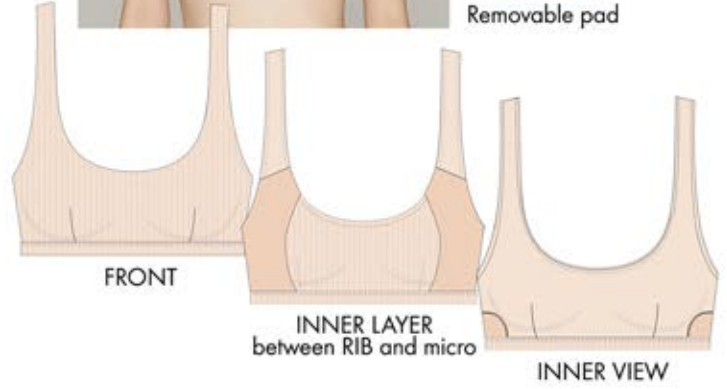
INNNOVATION SS20 - NIGHT BRA

ナイトブラ
Night Bra
寝てる時もラクちんサポート

ノンワイヤーで
ラクな着けごころ

伸びにくい素材で
バストの横流れを
防いでサポート

AMOSTYLE リラクシングナイトブラ



FLOATING BRA
INNER VIEW of the CAMI
and the SLIPDRESS



AM♡STYLE

by Triumph

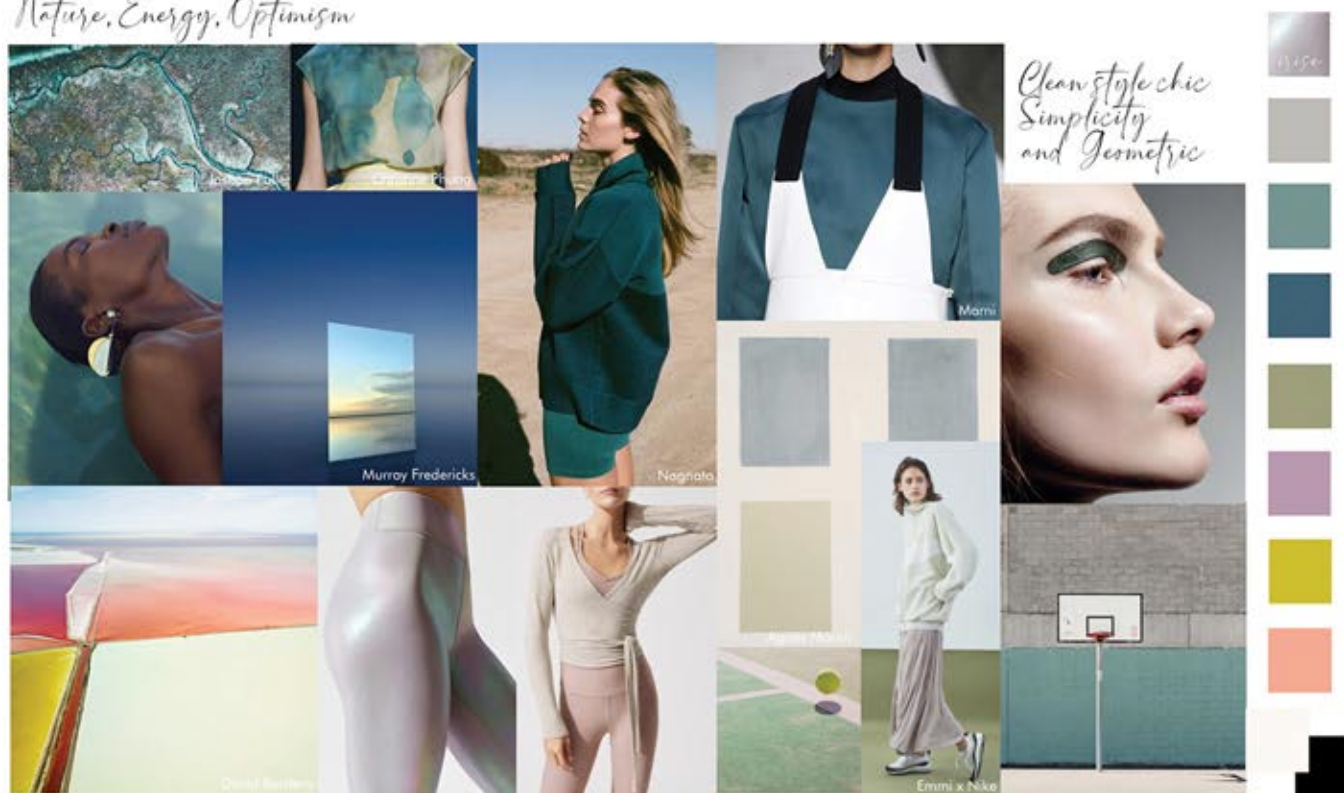
CREATIVE PROJECT *Activewear & Sportswear*

Attitudes



Colors

Nature, Energy, Optimism



Colors - Option 1



MOLDED CUP BRA Comfort & Support
(All cups - A to G)
Straps details, can be crossed in the back



SEAMLESS BRALETTE
Knit jacquard
with reinforced parts
underbust, under arm, middle front



POLO TEE
Details of contrasted colors
raglan/kimono sleeves - Print : FREE SPIRIT



JERSEY SWEAT
Loose shape, lightly crop top



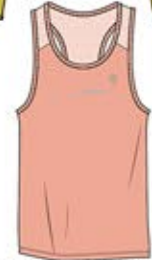
LEGGINGS
lined belt and lightly gathered
for more comfort
to wear in a sportive and casual way
mesh details on back legs



SEAMLESS CYCLING SHORTS
Knit jacquard
with reinforced parts
stomach, hips



JERSEY SWEAT PANTS
Loose comfortable shape
"sarouel"



JERSEY MARCEL TANK TOP
Cotton and mesh details



SEAMLESS BODY
Knit jacquard and micro
Back details : "scarf" straps



SHORTS



JERSEY LONG SWEAT WITH HOOD
Straight shape, to stay warm after session

*All pieces have tone on tone or contrasted logo



TOTE BAG



SCRUNCHY*



HANDBAND*



SOCKS



YOGAMAT

*Accessories made from leftover fabrics

SEAMLESS JACQUARD ALLO-OVER



ELASTIC STRAPS



COLORS:



Colors - Option 2



MOLDED CUP BRA Comfort & Support
(All cups - A to G)
Straps details can be crossed in the back
Mat & shiny micro



SEAMLESS BRALETTE
Knit jacquard
with reinforced parts
underbust, under arm, middle front



POLO TEE
Details of contrasted colors
raglan/kimono sleeves - Print : FREE SPIRIT



JERSEY SWEAT
Loose shape, lightly crop top



LEGGINGS
lined belt and lightly gathered
for more comfort
to wear in a sportive and casual way
mesh details on back legs
Mat & shiny micro



SEAMLESS CYCLING SHORTS
Knit jacquard
with reinforced parts
stomach, hips



JERSEY SWEAT PANTS
Loose comfortable shape
"sarouel"



JERSEY MARCEL TANK TOP
Coton and mesh details



SEAMLESS BODY
Knit jacquard and micro
Back details : "scarf" straps



SHORTS



JERSEY LONG SWEAT WITH HOOD
Straight shape, to stay warm after session

* All pieces have tone on tone or contrasted logo



TOTE BAG



SCRUNCHY*



HANDBAND*



SOCKS



YOGAMAT

* Accessories made from leftover fabrics

SEAMLESS JACQUARD ALL-OVER



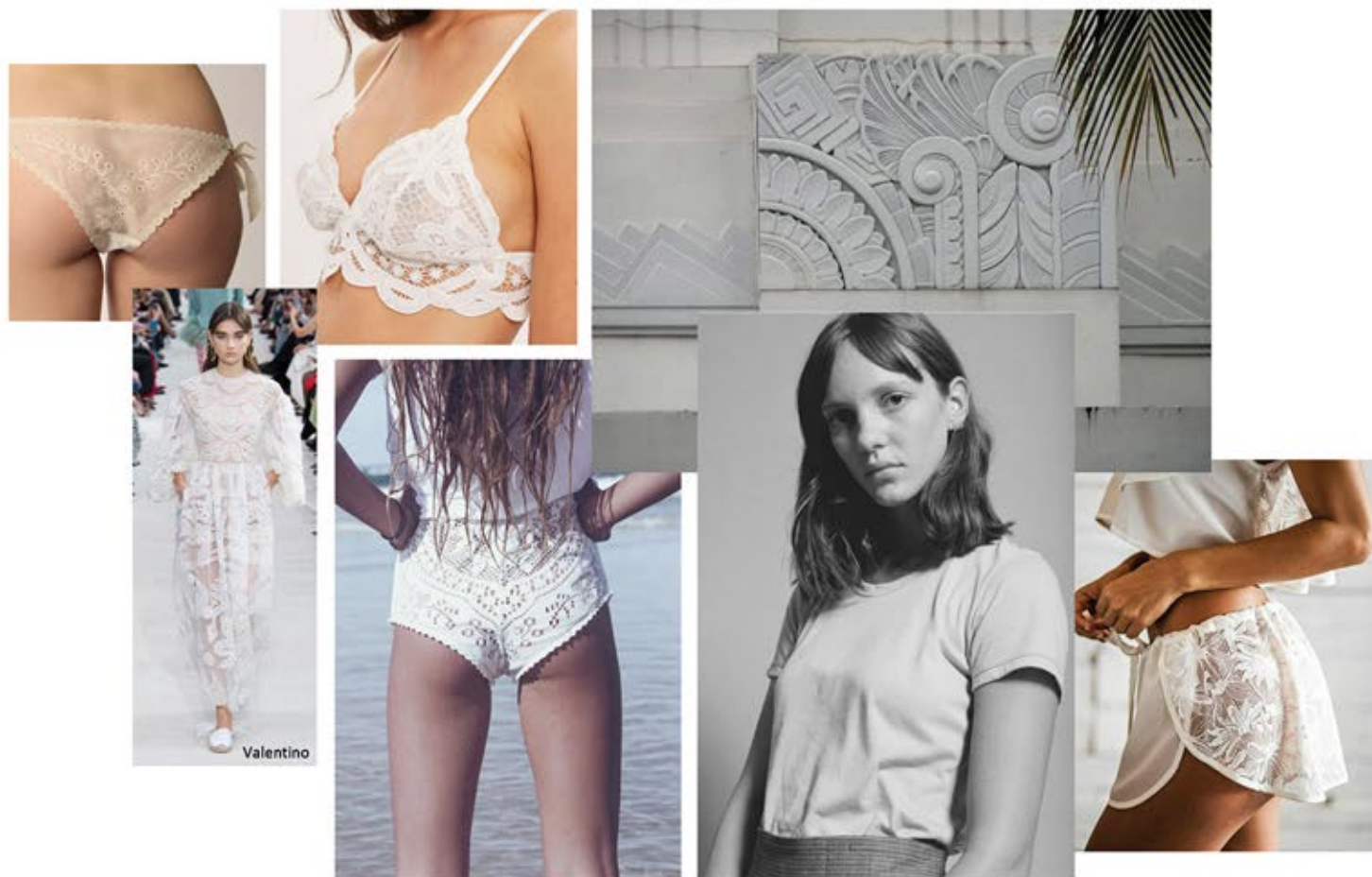
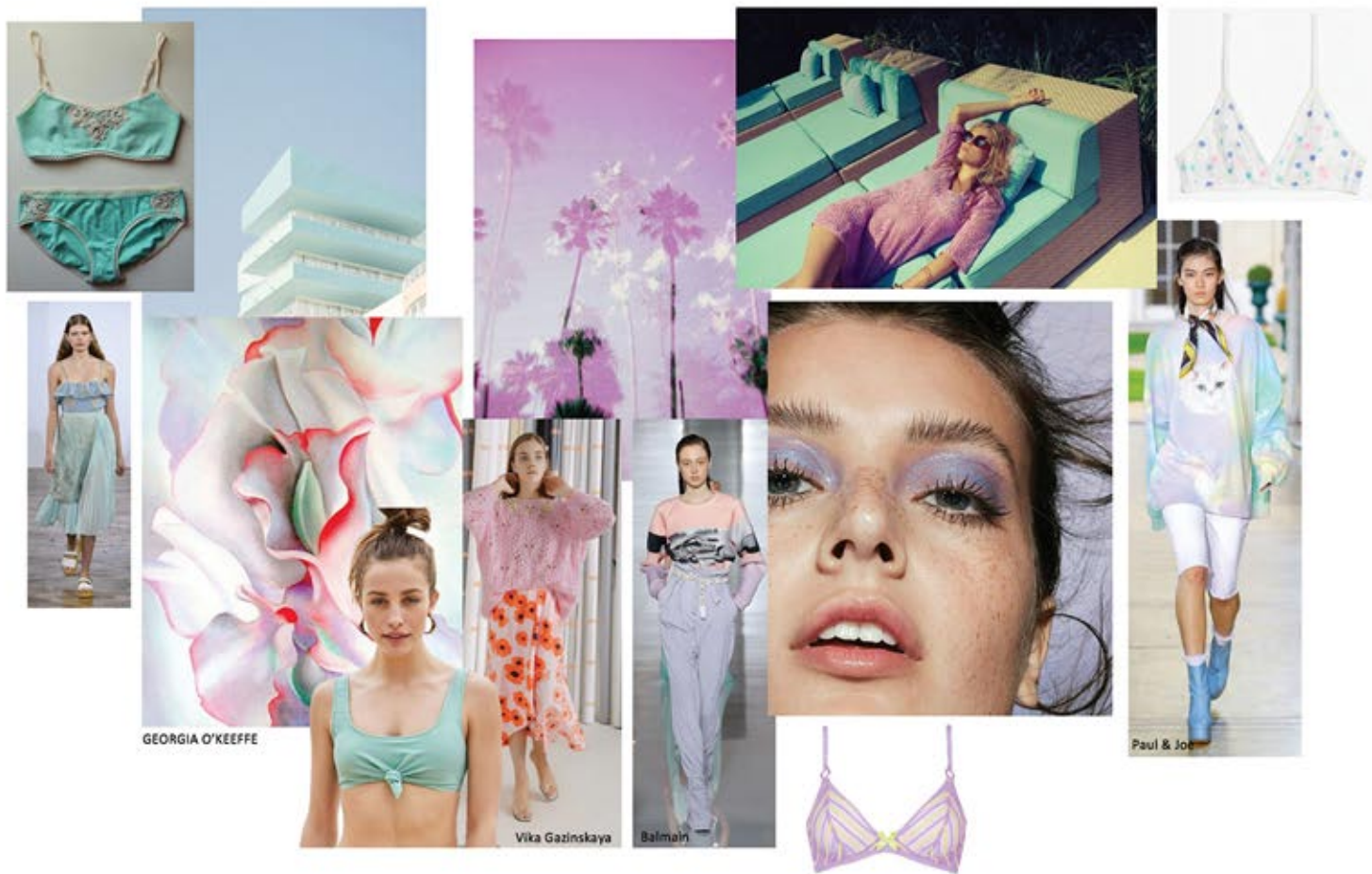
ELASTIC STRAPS



COLORS:



MOODBOARDS Trends & Research



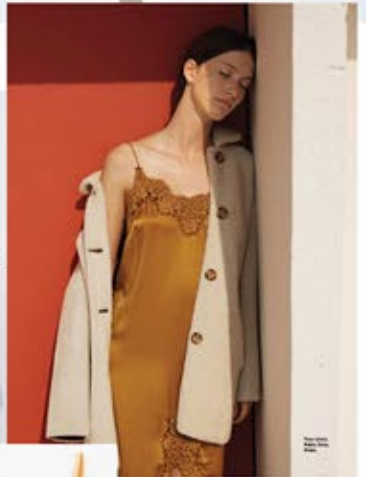
MOODBOARDS Trends & Research



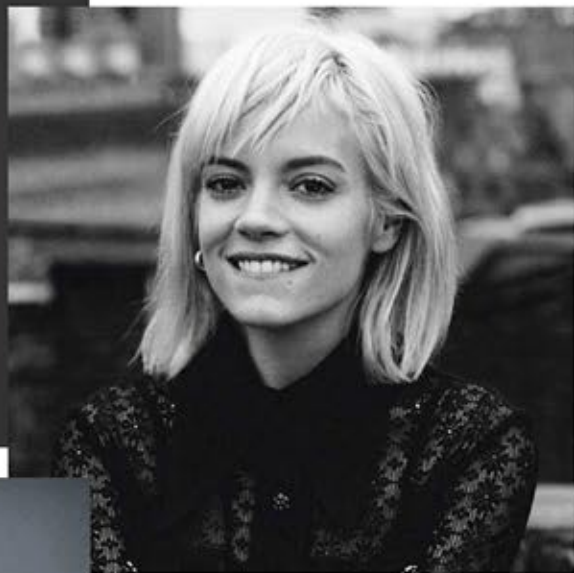
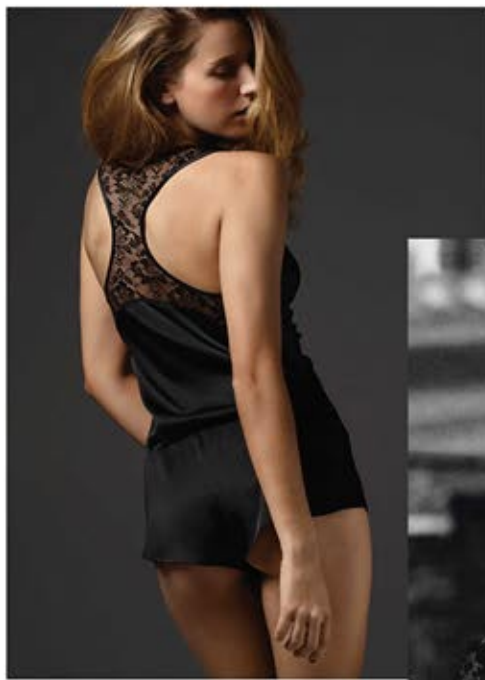
Vika Gazinskaya



Valentino



MOODBOARDS & Silhouettes



Haute Couture Printemps Eté 2020



ALAIN MABILLE



GEORGIO ARMANI



STEPHANE ROLLAND



IRIS VAN HERPEN



ALBERTO MUSSI



SCHIAPELLI

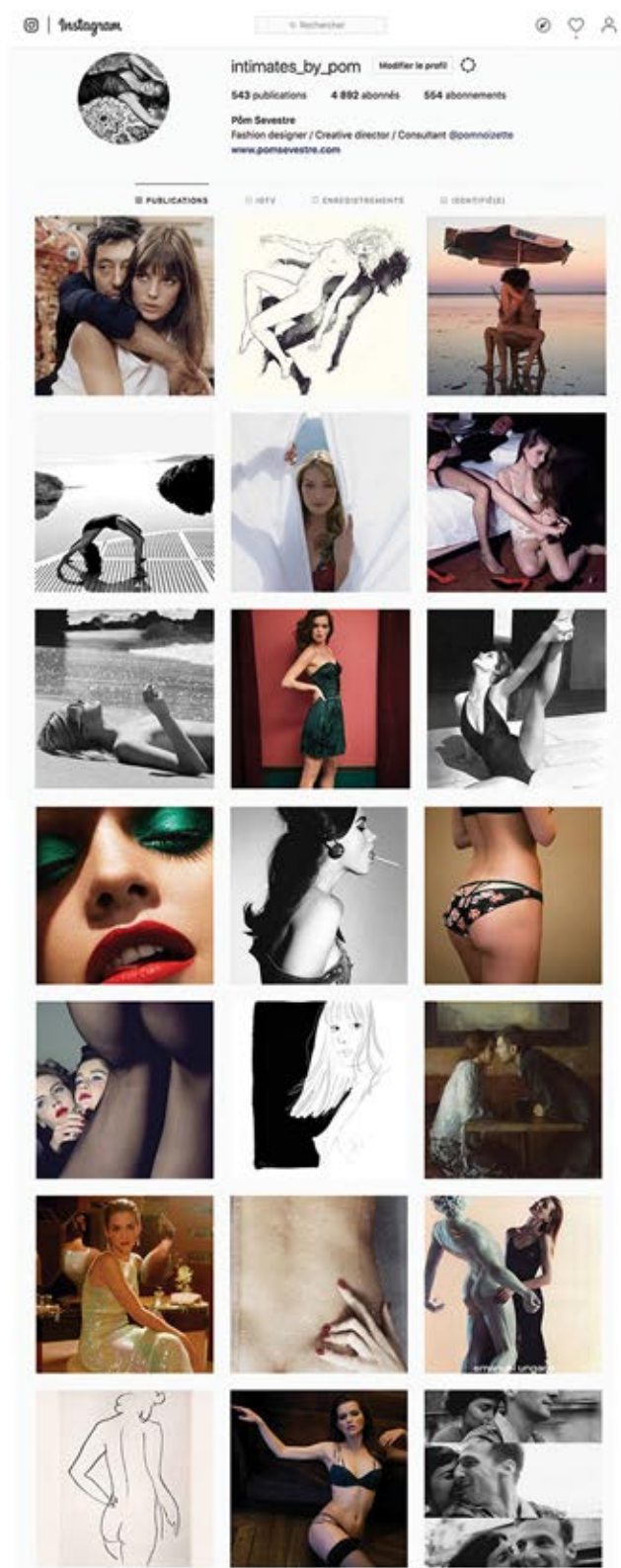
from 20

Jean Paul Gaultier, Haute Couture SS 20

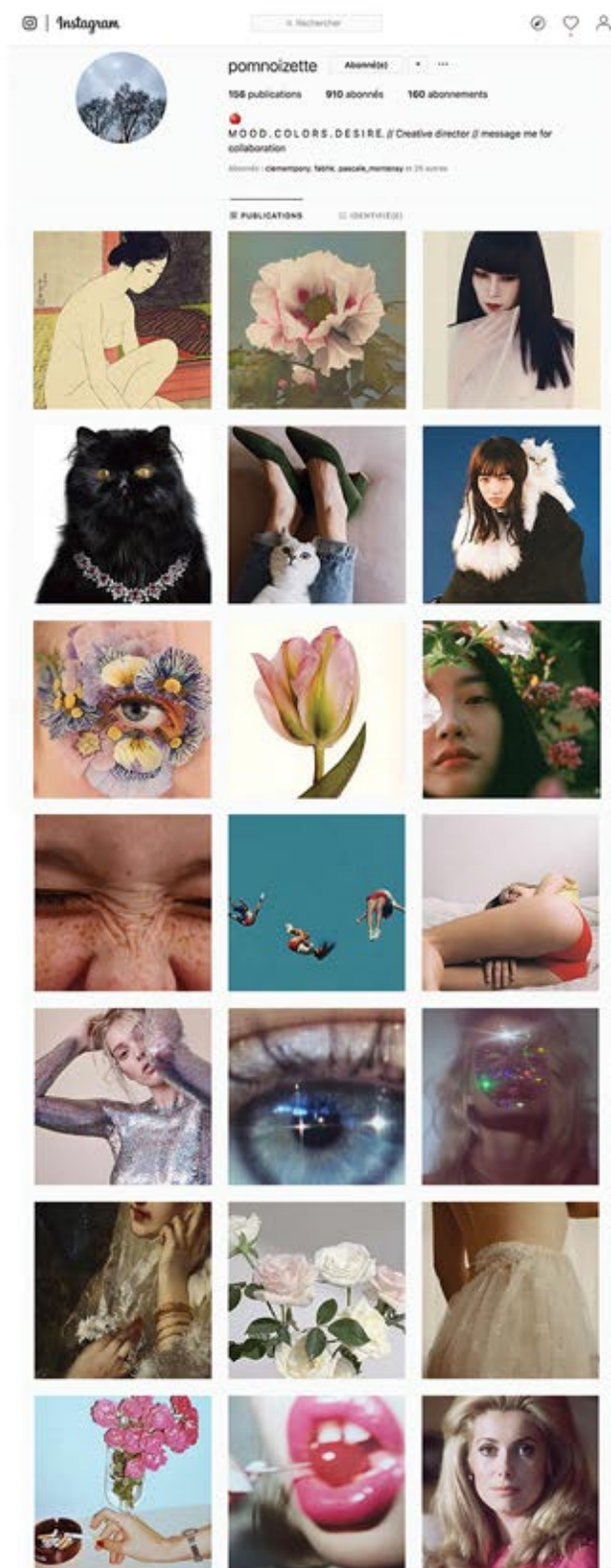


from 20

DIGITAL Instagram



@intimates_by_pom



@pomnoizette